

'H' FRAME (4 PILLAR) FOR HYDRO-PNEUMATIC CYLINDER

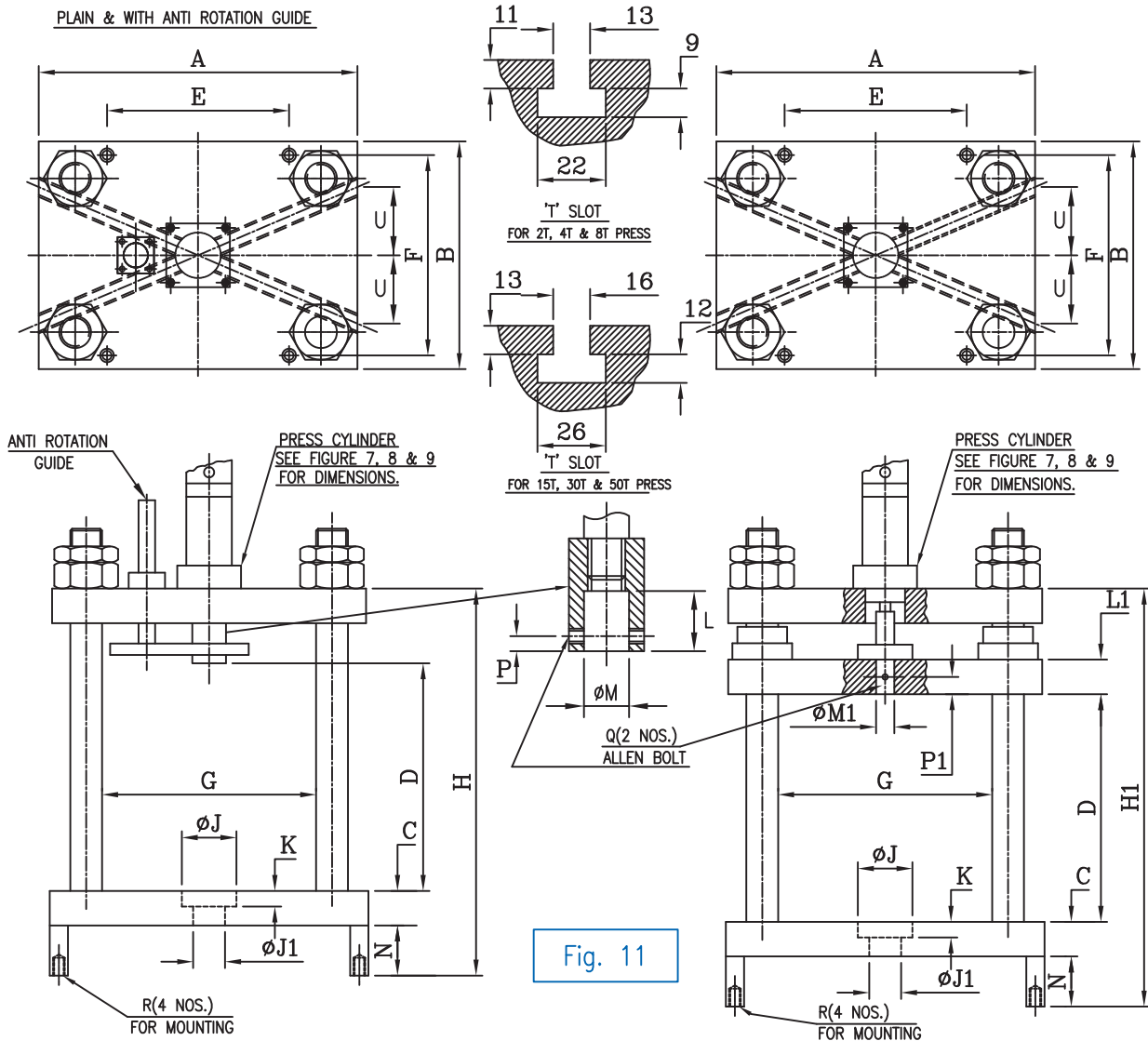


Fig. 11

MODEL NUMBER			DIMENSIONS FOR 6 mm & 12 mm POWER STROKE PRESS																						
PLAIN	WITH ANTI ROTATION GUIDE	WITH GUIDED MOVING PLATE	TON	A	B	C	D	E	F	G	H	H1	J	J1	K	L	L1	M	M1	N	P	P1	Q	R	U
4IP2	4IP2A	4IP2G	2	350	250	32	250	200	220	265	450	480	60	45	20	25	32	20	20	70	10	16	M6	M10	75
4IP4	4IP4A	4IP4G	4	400	300	38	300	230	270	300	510	550	75	55	20	30	38	25	25	70	10	19	M6	M12	75
4IP8	4IP8A	4IP8G	8	475	300	52	300	270	270	350	555	610	105	75	20	40	52	25	25	80	15	26	M8	M12	75
4IP15	4IP15A	4IP15G	15	500	325	62	350	270	290	350	630	680	130	90	25	50	62	30	30	80	15	31	M10	M16	80
4IP30	4IP30A	4IP30G	30	510	350	72	350	275	310	350	660	735	130	90	25	80	72	40	40	85	20	36	M10	M16	90
4IP50	4IP50A	4IP50G	50	580	400	82	400	300	350	400	725	800	150	110	30	80	82	50	50	90	25	41	M12	M20	100
			DIMENSIONS FOR 24MM POWER STROKE PRESS																						
4IST1	4IST1A	4IST1G	1	350	250	32	250	200	220	265	450	480	60	45	20	25	32	20	20	70	10	16	M6	M10	75
4IST2	4IST2A	4IST2G	2	350	250	32	250	200	220	265	450	480	60	45	20	30	32	25	20	70	10	16	M6	M10	75
4IST4	4IST4A	4IST4G	4	400	300	38	300	230	270	300	510	550	75	55	20	40	38	25	25	70	10	19	M6	M12	75
4IST8	4IST8A	4IST8G	8	475	300	52	300	270	270	350	555	610	105	75	20	50	52	30	25	80	15	26	M8	M12	75
4IST15	4IST15A	4IST15G	15	500	325	62	350	270	290	350	630	680	130	90	25	80	62	40	30	80	15	31	M10	M16	80
4IST30	4IST30A	4IST30G	30	510	350	72	350	275	310	350	660	735	130	90	25	80	72	40	40	85	20	36	M10	M16	90

NOTE : Due to continuous Developments Dimensions are subject to change without notice