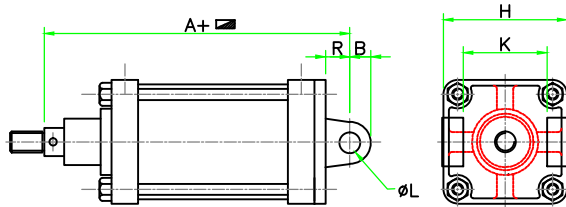
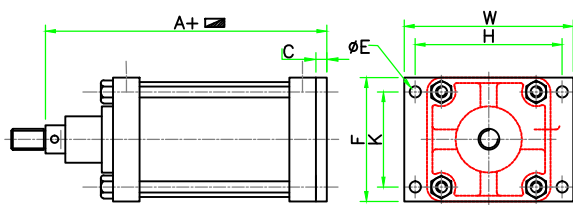


**REAR PIVOT MOUNTING**



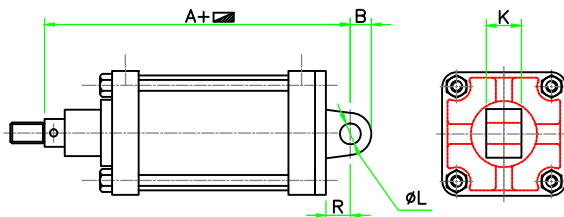
BORE SIZE	MTG. PART No.	A	B	H	K	ØL	R
38 (1-1/2")	15RP	150	12.7	54	32	12.7	16
50.8 (2")	20RP	150	12.7	63	41	12.7	16
57 (2-1/4")	22RP	150	12.7	73	45	12.7	16
63 (2-1/2")	25RP	150	12.7	76	51	12.7	16
63(2-1/2")(1")	25RP	176	19	76	51	16	16
76 (3")	30RP	176	19	92	57	19	22
102 (4")	40RP	176	19	114	76	19	22

**REAR FLANGE MOUNTING**



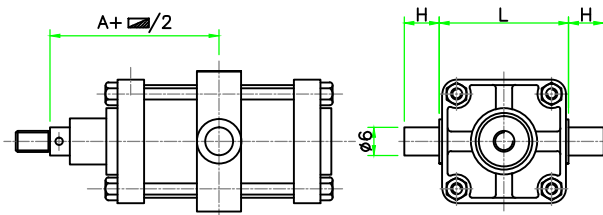
CYLINDER BORE	MTG. PART No.	A mm	C mm	ØE mm	F mm	H mm	K mm	W mm
38 (1-1/2")	15RF	134	10	7	51	67	37	83
50.8 (2")	20RF	134	10	7	63	86	45	108
57 (2-1/4")	22RF	134	10	8	70	89	52	108
63 (2-1/2")	25RF	134	10	8	76	95	57	114
63(2-1/2")(1")	25RF	164	10	8	76	95	57	114
76 (3")	30RF	164	13	10	89	111	67	134
102 (4")	40RF	166	13	10	111	133	86	153

**SINGLE PIVOT MOUNTING**



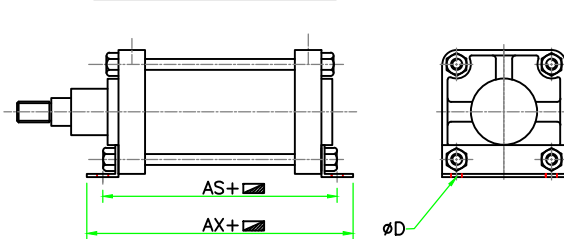
CYLINDER BORE	MTG. PART No.	A mm	B mm	K mm	ØL mm	R mm
38 (1-1/2")	15SP	158	12.7	19	12.7	16
50.8 (2")	20SP	156	12.7	19	12.7	16
57 (2-1/4")	22SP	156	12.7	19	12.7	16
63 (2-1/2")	25SP	156	12.7	19	12.7	16
63(2-1/2")(1")	25SP	156	12.7	19	12.7	16
76 (3")	30SP	196	19	25.4	19.1	22
102 (4")	40SP	198	19	31.8	19.1	22

**CENTER TRUNNION MOUNTING**



CYLINDER BORE	MTG. PART No.	A mm	B mm	H mm	L mm
38 (1-1/2")	15CT	87	19	25.4	60.4
50.8 (2")	20CT	87	19	25.4	70
57 (2-1/4")	22CT	87	19	25.4	85.7
63 (2-1/2")	25CT	87	22	29.5	89.4
63 (2-1/2")(1")	25CT	87	22	29.5	89.4
76 (3")	30CT	107	25.4	29.5	106
102 (4")	40CT	108	25.4	31.8	149.5

**FOOT MOUNTING**



CYLINDER BORE	MTG. PART No.	ØD mm	H mm	AS mm	AX mm	TR mm
38 (1-1/2")	15FM	7	31	121	146	37
50.8 (2")	20FM	7	31	121	146	37
57 (2-1/4")	22FM	9	40	127	149	52
63 (2-1/2")	25FM	9	42	127	149	57
63 (2-1/2")(1")	25FM	9	42	127	149	57
76 (3")	30FM	10	48	145	161	67
102 (4")	40FM	10	57	147	181	86