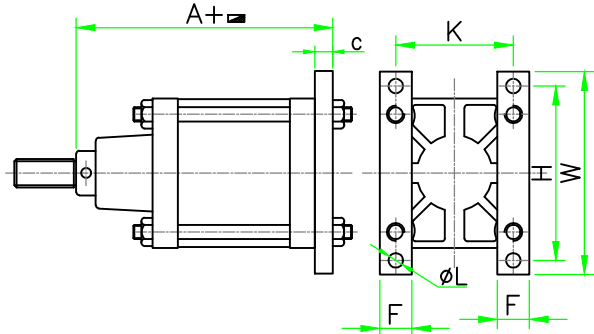


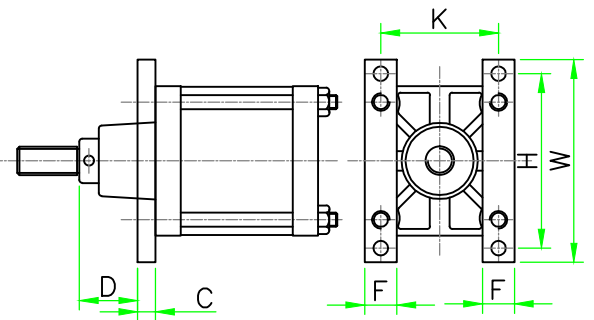
REAR FLANGE MOUNTING

BORE SIZE	MTG. PART NO	A	C	F	W	H	K	∅L
127 (5")	50RF	179	19	38.1	203	171.5	108	13.5
152 (7")	60RF	194	19	38.1	242	203.2	130	16.5
203 (8")	80RF	205	25	51	318	266.7	168	20
203 (8")	80RF	270	25	51	318	266.7	168	20
254 (10")	100RF	240	32	57	362	311.2	210	26
304 (12")	120RF	286	32	63.5	448	384.2	246	27
354 (14")	140RF	286	38	76.2	533	457.2	292	33.4



FRONT FLANGE MOUNTING

BORE SIZE	MTG. PART NO	C	D	F	W	H	K	∅L
127 (5")	50FF	19	46	38.1	203	171.5	108	13.5
152 (7")	60FF	19	44	38.1	242	203.2	130.2	16.5
203 (8")	80FF	25.4	40	51	318	266.7	168.3	20
203 (8")	80FF	25.4	40	51	318	266.7	168.3	20
254 (10")	100FF	32	11	57	362	311.2	209.5	26
304 (12")	120FF	32	28	63.5	448	384.2	246	27
354 (14")	140FF	38	22	76.2	533	457.2	292	33.4



FORK

BORE SIZE	MTG. PART NO	KK BSF	∅CK	CP	CL	CM	LE	T	CE
5"	50F	1"-10	25.4	89.0	50.8	25.4	50.8	15	114
6"	60F	1"-10	25.4	89.0	50.8	25.4	50.8	15	114
8"	80F	1 1/2"-80	25.4	95.3	63.5	25.4	38.1	15	127
10"	100F	2"-7	31.75	120.6	76.2	31.75	44.5	18	158
12"	120F	2"-7	31.75	120.6	76.2	31.75	44.5	18	158
14"	140F	2"-7	31.75	120.6	76.2	31.75	44.5	18	158

▨ : STROKE OF THE CYLINDER

