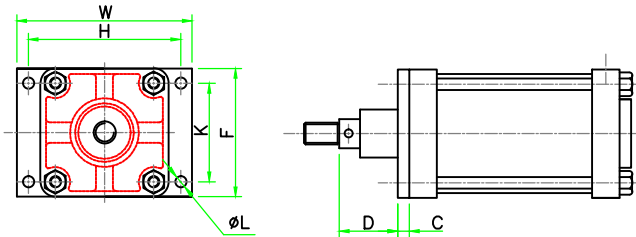
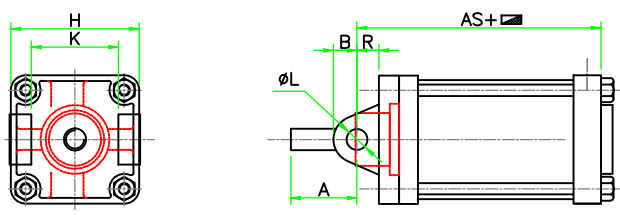


FRONT FLANGE MOUNTING



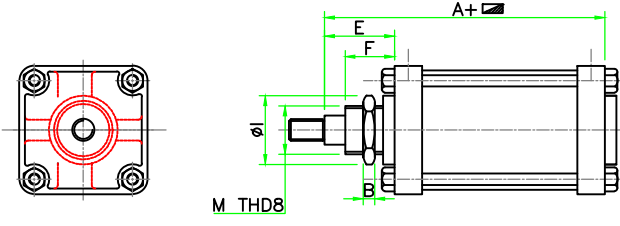
CYLINDER BORE	MTG. PART No.	C mm	D mm	F mm	H mm	K mm	øL mm	W mm
38 (1-1/2")	15FF	10	39	54	67	37	7	83
50.8 (2")	20FF	10	39	63	86	45	7	108
57 (2-1/4")	22FF	10	39	70	89	52	8	108
63 (2-1/2")	25FF	10	39	76	95	57	8	114
63 (2-1/2" (1"))	25FF	10	51	76	95	57	8	114
76 (3")	30FF	13	49	89	111	67	10	134
102 (4")	40FF	13	49	111	133	86	10	153

FRONT PIVOT MOUNTING



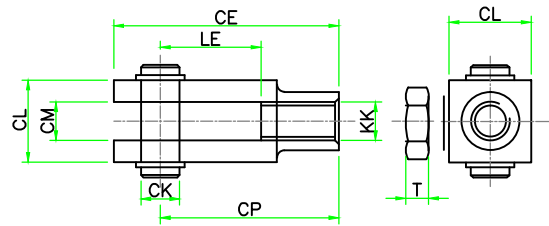
CYLINDER BORE	MTG. PART No.	A mm	B mm	H mm	K mm	øL mm	R mm	AS mm
38 (1-1/2")	15FT	54	12.7	54	32	12.7	16	104
50.8 (2")	20FT	54	12.7	63	41	12.7	16	104
57 (2-1/4")	22FT	73	12.7	73	45	12.7	16	104
63 (2-1/2")	25FT	83	12.7	82	51	12.7	16	104
63 (2-1/2" (1"))	25FT	83	16	75	45	19	22	122
76 (3")	30FT	92	19	92	57	19	22	122
102 (4")	40FT	114	19	115	76	19	22	122

NECK MOUNTING



CYLINDER BORE	MTG. PART No.	A mm	E mm	F mm	I mm	B mm	M BSF
38 (1-1/2")	15NM	125	48	25	38	6	7/8" 14
50.8 (2")	20NM	125	48	25	38	6	7/8" 14
57 (2-1/4")	22NM	125	48	25	38	6	7/8" 14
63 (2-1/2")	25NM	125	48	25	38	6	7/8" 14
63 (2-1/2" (1"))	25NM	151	61	32	51	10	1-1/4
76 (3")	30NM	151	61	32	51	10	1-1/4
102 (4")	40NM	151	61	32	51	10	1-1/4

FORK



BORE SIZE	KK BSF	øCK	CP	CL	CM	LE	T	CE
38 (1-1/2")	1/2"	12.7	63.5	23.8	15.8	32	12	76.2
50.8 (2")	1/2"	12.7	63.5	23.8	15.8	32	12	76.2
57 (2-1/4")	1/2"	12.7	63.5	23.8	15.8	32	12	76.2
63 (2-1/2")	1/2"	12.7	63.5	23.8	15.8	32	12	76.2
63 (2-1/2" (1"))	3/4"	19	77.7	34.9	19	50.8	12	96.8
76 (3")	3/4"	19	77.7	34.9	19	50.8	12	96.8
102 (4")	3/4"	19	77.7	34.9	19	50.8	12	96.8